

Kenton C. Ward, CFM
Surveyor of Hamilton County
Phone (317) 776-8495
Fax (317) 776-9628

Suite 188
One Hamilton County Square
Noblesville, Indiana 46060-2230

November 2, 2012

To: Hamilton County Drainage Board

Re: Williams Creek Drainage Area, Elliott Creek #311 Arm

Upon review of the Williams Creek Drainage Area, I believe that the Elliott Creek Drain should be made an arm to the Williams Creek Drainage Area as the Elliott Creek Drain is a tributary to the Williams Creek Drain. This would also avoid a double assessment on the tracts currently assessed for the Elliott Creek Drain when the remainder of the Williams Creek Drain is assessed for maintenance.

The Elliott Creek Drain was created per my report dated June 10, 1999 and approved by the Board at a hearing on July 26, 1999 (See Drainage Board Minute Book #5, pages 188 to 189). At present the Elliott Creek Drain maintenance assessment affects 675.92 acres and 1206 lots. The rates of assessment for the drain are set at \$3.00 per acre with a \$15.00 minimum, and \$10.00 per acre for roads with a \$65.00 minimum. The Village of Towne Pointe and Lakeside Park Subdivisions are assessed at \$10.00 per acres, with a \$65.00 minimum, and \$65.00 per lot minimum. This rate collects \$32,546.54 annually and the balance within the fund is \$151,301.69.

The current maintenance assessments, as per the existing rates set for the Williams Creek Drainage Area are as follows:

1. Maintenance assessment for roads and streets are set at \$10.00 per acre.
2. Maintenance assessment for agricultural tracts are set at \$3.00 per acre with a \$15.00 minimum.
3. Maintenance assessment for non-platted residential tracts are set at \$3.00 per acre with a \$15.00 minimum.

4. Maintenance assessment for commercial, institutional and multi-family residential tracts are set at \$10.00 per acre with a \$75.00 minimum.
5. Maintenance assessment for platted lots in subdivisions whose drainage systems will not be part of the regulated drain shall be set at \$35.00 per lot/minimum. Common areas within non-regulated drain subdivisions shall be assessed at \$5.00 per acre with a \$35.00 minimum.
6. Maintenance assessment for platted lots within subdivisions whose drainage system will be part of the regulated drain shall be set at \$65.00 per lot/minimum. Common areas within the regulated drain subdivisions shall be set at \$10.00 per acre with a \$65.00 minimum.

The total annual assessment for this arm will be \$58,067.82.

Since part of the Village of West Clay Drain falls within the Elliott Creek Drainage Shed and the Village of West Clay Drain has special assessment rates due to the unique nature of the maintenance access easement, the Village of West Clay Drainage Shed will be left in place. The parcels within the Village of West Clay Drainage Shed shall be assessed to Williams Creek Drain as unregulated (#5) rates listed above except parcels designated as commercial properties. Any future maintenance work on the Village of West Clay Drain will be paid from the Village of West Clay maintenance fund.

The parcels in the Estates of Clay West will be assessed as regulated subdivision.

The current balance of the Elliott Creek Drain shall be kept separate and these funds expended for needed maintenance on the Elliott Creek Drain. This shall be done until the funds are exhausted. At that time funding for repairs shall then be taken from the Williams Creek Drainage Area fund.

Future assessments for the drainage area of the Elliott Creek Drain will be made into the Williams Creek Drainage Area fund. No further maintenance collections for the Elliott Creek Drain shall be made after 2013 other than any delinquent assessment penalties and interest which remain unpaid.

I recommend that the Board set a hearing for this consolidation for May 28, 2013.

Sincerely,



Kenton C. Ward, CFM
Hamilton County Surveyor

KCW/pll

FINDINGS AND ORDER

CONCERNING THE MAINTENANCE OF THE

Williams Creek Drainage Area, Elliott Creek Arm

On this 28th day of May, 2013, the Hamilton County Drainage Board has held a hearing on the Maintenance Report and Schedule of Assessments of the *Williams Creek Drainage Area, Elliott Creek Arm*.

Evidence has been heard. Objections were presented and considered. The Board then adopted the original/amended Schedule of Assessments. The Board now finds that the annual maintenance assessment will be less than the benefits to the landowners and issues this order declaring that this Maintenance Fund be established.

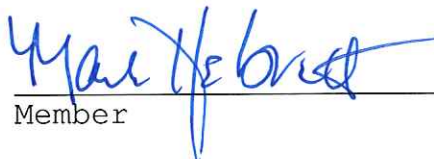
HAMILTON COUNTY DRAINAGE BOARD



President



Member



Member

Attest:



WILLIAMS CREEK DRAINAGE AREA, ELLIOTT CREEK ARM

Property Owner	Parcel Number	Acres Benefited	Current Assessment	Proposed Maintenance	% of Maint. Cost
Crook, Andrew W. & Rhonna L.	17-09-21-00-00-011.002	13.07	\$39.22	\$39.22	0.07%
Golden Hour LLC	17-09-28-00-47-143.000	One Lot	\$15.00	\$35.00	0.06%
	17-09-28-00-47-232.000	One Lot	\$15.00	\$35.00	0.06%
Total		13.07 Ac. & 2 Lots	\$69.22	\$109.22	0.19%

April 29, 2013

Office of Hamilton County Drainage Board
One Hamilton County Square, Ste. 188
Noblesville, IN 46060



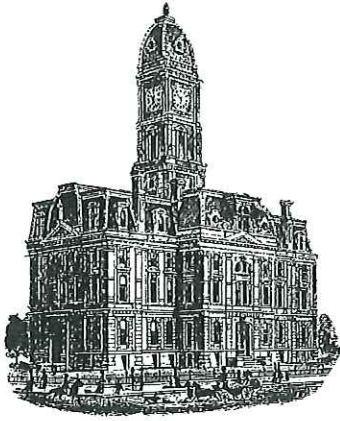
Re: Objection to proposed schedule of assessment for Parcel 17-09-21-00-00-011.002

We just received the Notice of Hearing to Establish Annual Assessments for the Periodic Maintenance of the Williams Creek Drainage Area, Elliot Creek #311 Arm. Our acres benefited increased from 7.27 acres to 13.07 acres. We have made no changes to our property, so we do not see how the acres benefits can be increased by 80%, which we feel is excessive. With the increase in the acres, our proposed Williams Creek assessment also increased 80%, to \$39.22 compared to the previous amount of \$21.82.

Any information you can provide prior to the May 28th hearing on the change of acreage would be appreciated. We plan to appear before the board at the hearing to present our case. Please acknowledge that this objection has been duly recorded to insure our right to object is protected.

A handwritten signature in blue ink that reads "Andrew W. Crook". The signature is written in a cursive, flowing style.

Andrew W. and Rhonna L. Crook
2288 West 136th Street
Carmel, IN 46032
317-844-9216
Email: walking@sbcglobal.net



SURVEYOR'S OFFICE
Hamilton County

Kenton C. Ward, CFM
Surveyor of Hamilton County
Phone (317) 776-8495
Fax (317) 776-9628

Suite 188
One Hamilton County Square
Noblesville, Indiana 46060-2230

May 20, 2013

Andrew W. & Rhonna L. Crook
2288 West 136th Street
Carmel, IN 46032

RE: Williams Creek Drainage Area, Elliott Creek #311 Arm

I received your letter dated April 29, 2013 regarding the above referenced hearing. Your total acres in your tract are 20.34 acres. Your previous assessment to the Elliott Creek Drain was based on 13.07 acres benefited and the annual assessment was \$39.22. The new assessment to the Williams Creek Drain will be based on the same 13.07 acres benefited and the annual assessment will also be \$39.22. The 7.27 acres benefited before to Williams Creek will remain the same at an annual assessment of \$21.82. The annual assessment paid for Williams Creek and Elliott Creek Drains in 2013 is \$61.02. The annual assessment you will be paying for the Williams Creek Drain in 2014 will be \$61.02. You will no longer be paying for the Elliott Creek Drain after 2013.

Sincerely,

Kenton C. Ward, CFM
Hamilton County Surveyor

OFFICE OF
HAMILTON COUNTY DRAINAGE BOARD
 April 26, 2013

Notice of Hearing to Establish Annual Assessments for the Periodic Maintenance of the
Williams Creek Drainage Area, Elliott Creek #311Arm.

Crook, Andrew W & Rhonna L
 2288 136th St W
 Carmel, IN 46032

Under the Indiana Drainage Code, all land which drains directly, or indirectly, may be assessed for either maintenance cost or reconstruction cost within the drain. In making the calculation for each parcel, the Drainage Board must calculate the percentage of the cost attributable to each parcel of land benefitted. From time to time the assessments may be increased or changed. The chart below contains your proposed assessment and your percentage of the total annual maintenance contribution to the costs attributable to providing drainage to your land.

The Drainage Board has received a maintenance report and schedule of assessments which affects your land. You are hereby notified that the maintenance report of the County Surveyor and the schedule of assessments made by the Drainage Board have been filed and are available for public inspection in the office of the County Surveyor.

The Surveyor has estimated that the annual cost of periodically maintaining the entire drain is **\$58,067.82**. The schedule of assessments shows you are the owner of tracts within the drainage shed. The following is your pro rata share for each tract and the proposed annual assessment for those tracts: This assessment is not a charge for services associated with regulating the quality of storm water within your city or town.

Parcel: 17-09-21-00-00-011.002 Rate: Residential/Ag				
Description	Acres Benefited	Current Elliott Creek Assessment	Proposed Williams Creek Assessment	% of Total
S21 T18 R3 20.34Ac	13.07	\$39.22	\$39.22	0.07%
The period of collections will be until the balance in the Williams Creek Drainage Area fund reaches eight (8) times its annual assessment. When Elliott Creek is combined with Williams Creek, future assessments will be made to Williams Creek instead of Elliott Creek. <u>The acreage from Elliott Creek will be added to the existing acreage already assessed to Williams Creek.</u>				

A public hearing will be held by the Drainage Board in Commissioner's Court at **9:15 A.M. on May 28, 2013** on the Surveyor's maintenance report and the proposed schedule of assessments. The law requires that any objection must be written and filed not less than five (5) days before the above hearing on the ground that benefits assessed are excessive. Written evidence in support of objections may also be filed. The failure of any owner to file an objection constitutes a waiver of his right to thereafter object on such ground to any final action of the Board. On or before the hearing date the Surveyor or any owner of lands named in the schedule of assessments may cause written evidence to be filed in support of or in rebuttal to any objection filed.

HAMILTON COUNTY DRAINAGE BOARD
 One Hamilton County Square, Ste. 188
 Noblesville, IN 46060

For a copy of the Surveyor's Report to the Drainage Board and a copy of the map, if applicable, please go to www.hamiltoncounty.in.gov/drainageboardnotices.

Search by: Parcel # Parcel #: 17-09-21-00-00-011.00 To: _____ Tax year: 2012 pay 2013

Add to list Replace list Map #: _____ State Parcel #: _____ Type: <all>

Search all years

- Details
- Drains
- Notes & Tags
- History
- Taxes & Payments
- Calculation
- Adjustments
- Reports
- Email
- Documents

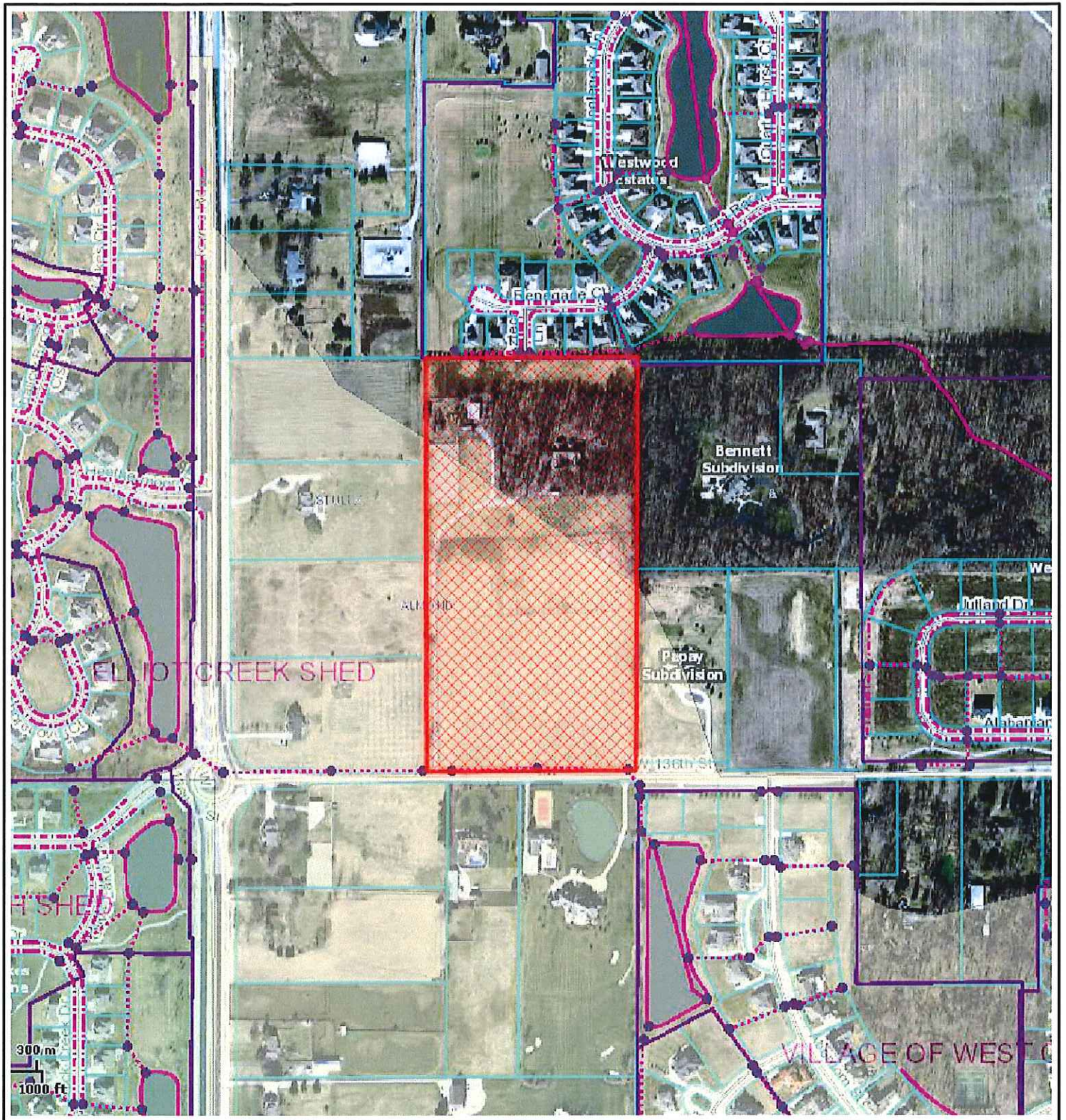
Current Acreage for Drain Purposes: 20.34

<< 2012 pay 2013 >>

Maintenance Drains

Drain	Status	Rate	Benefited Acres	Annual Assessme...	N
M311-Elliot Creek (5311)	Suspended	Residential/Ag	13.07	\$39.22	
M315-Williams Creek (5315)	Active	Residential/Ag	7.27	\$21.82	

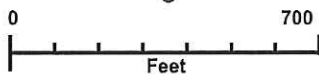
~~20.34~~ \$61.02



Hamilton County

This is My Map

Printed: May 01, 2013



The information on this web site is provided and hosted by Hamilton County, Indiana. Continued use of this web site is conditional upon your explicit acceptance of the terms and conditions set forth in this disclaimer document. The data provided herein may be inaccurate and/or out of date. Any person or entity who relies on this data for any purpose whatsoever does so solely at their own risk. Neither Hamilton County Indiana nor its employees or officers warrant the accuracy, reliability, or timeliness of any of the data provided herein. This data is provided "as is" without warranty of any kind. Hamilton County may elect to discontinue this service without notice at any point in the future.

County of
Hamilton
Indiana
www.hamiltoncounty.in.gov

Golden Hour, LLC, c/o Mark Corwin, 11400 Dona Dolores Place, Studio City, CA 91604
323 650-2209

May 2, 2013

Hamilton County Drainage Board
One Hamilton County Square, Ste. 188
Noblesville, IN 46060



Dear Board,

I believe it is excessive for me to pay for both a garage unit along with a condo unit at the Wentworth at Westclay. My condo is housed in the same structure as the garage. Why must I pay twice for the same structure and, at the same assessment rate.

I certainly don't mind paying my fair share. I just think this assessment is excessive in my case.

Thank you for your consideration,

Mark Corwin

Mark Corwin
Golden Hour, LLC

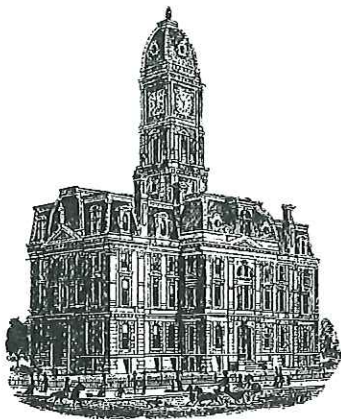
Parcel 17-09-28-00-47-143.00

Description: S28 T18 R3 Wentworth at Westclay Condo Bldg 16 Unit 1B

Parcel 17-09-28-00-47-232.000

Description: S28 T18 R3 Wentworth at Westclay Condo Bldg 16

Williams Creek, Elliott Creek Arm



Kenton C. Ward, CFM
Surveyor of Hamilton County
Phone (317) 776-8495
Fax (317) 776-9628

Suite 188
One Hamilton County Square
Noblesville, Indiana 46060-2230

May 20, 2013

Golden Hour, LLC
C/o Mark Corwin
11400 Dona Delores Place
Studio City, CA. 91604

RE: Williams Creek Drainage Area, Elliott Creek #311 Arm

I received your objection dated May 2, 2013 regarding the above referenced hearing. Please be aware that per the secondary plat for Wentworth at West Clay the living units and garage units are platted as separated parcels. When mapping the condos for taxation the Auditor's Office was required to map them separately because of the plat. Per IC 36-9-27 the Drainage Board must assess the property owners as per the records of the County Auditor.

Sincerely,

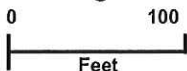
Kenton C. Ward, CFM
Hamilton County Surveyor



Hamilton County

This is My Map

Printed: May 06, 2013



The information on this web site is provided and hosted by Hamilton County, Indiana. Continued use of this web site is conditional upon your explicit acceptance of the terms and conditions set forth in this disclaimer document. The data provided herein may be inaccurate and/or out of date. Any person or entity who relies on this data for any purpose whatsoever does so solely at their own risk. Neither Hamilton County Indiana nor its employees or officers warrant the accuracy, reliability, or timeliness of any of the data provided herein. This data is provided "as is" without warranty of any kind. Hamilton County may elect to discontinue this service without notice at any point in the future.

County of
Hamilton
Indiana
www.hamiltoncounty.in.gov

Hamilton County Drainage Board
One Hamilton County Square Ste 188
Noblesville, IN 46060

May 22, 2013

Re: Objection to the Proposed Drainage Cost Assessment

Dear Hamilton County Drainage Board:

The objective of this letter is to object to the Surveyor's proposed schedule of assessments for the Williams Creek Drainage Area, Elliot Creek #311 Arm on the grounds that the benefits assessed are excessive and arbitrary.

I am the owner of two parcels, one being a small two-bedroom apartment and the other a small unattached car garage, that are part of the Wentworth at Westclay Condominium buildings (parcel numbers 17-09-28-00-47-008 and 17-09-28-00-47-190). It is my position that it is excessive and arbitrary for the Board to charge \$35 per lot for the maintenance of drains to an apartment on the third floor of a building and another \$35 for an unattached car garage. The assessment should be based on property value and/or property square footage. I am being assessed the same amount of money as other owners within West Clay that own houses with attached garages that are four, five or more times bigger than my property and in some cases over ten times the value of my property. My apartment is a mere 1200 square feet and the garage less than 100 square feet and I am being assessed the same amount as houses that have over 6000 square feet.

I thank you for your consideration of this objection and I pray that you will not approve the proposed assessment.

Sincerely,



Otto G. Celis Schmidt
12714 University Crescent Unit 3B
Carmel, IN 46032



RETURNED

OFFICE OF
HAMILTON COUNTY DRAINAGE BOARD
April 26, 2013

Notice of Hearing to Establish Annual Assessments for the Periodic Maintenance of the
Williams Creek Drainage Area, Elliott Creek #311Arm.

Chapman, Nairi K
12917 Currier St
Carmel, IN 46032

Under the Indiana Drainage Code, all land which drains directly, or indirectly, may be assessed for either maintenance cost or reconstruction cost within the drain. In making the calculation for each parcel, the Drainage Board must calculate the percentage of the cost attributable to each parcel of land benefitted. From time to time the assessments may be increased or changed. The chart below contains your proposed assessment and your percentage of the total annual maintenance contribution to the costs attributable to providing drainage to your land.

The Drainage Board has received a maintenance report and schedule of assessments which affects your land. You are hereby notified that the maintenance report of the County Surveyor and the schedule of assessments made by the Drainage Board have been filed and are available for public inspection in the office of the County Surveyor.

The Surveyor has estimated that the annual cost of periodically maintaining the entire drain is **\$58,067.82**. The schedule of assessments shows you are the owner of tracts within the drainage shed. The following is your pro rata share for each tract and the proposed annual assessment for those tracts: This assessment is not a charge for services associated with regulating the quality of storm water within your city or town.

Parcel: 17-09-28-00-37-004.000 Rate: Un-Regulated Subd

Description	Acres Benefitted	Current Elliott Creek Assessment	Proposed Williams Creek Assessment	% of Total
S28 T18 R3 Village Of Westclay C Lot 1604 Blk 16	One Lot	\$15.00	\$35.00	0.06%

The period of collections will be until the balance in the Williams Creek Drainage Area fund reaches eight (8) times its annual assessment. When Elliott Creek is combined with Williams Creek, future assessments will be made to Williams Creek instead of Elliott Creek.

A public hearing will be held by the Drainage Board in Commissioner's Court at **9:15 A.M. on May 28, 2013** on the Surveyor's maintenance report and the proposed schedule of assessments. The law requires that any objection must be written and filed not less than five (5) days before the above hearing on the ground that benefits assessed are excessive. Written evidence in support of objections may also be filed. The failure of any owner to file an objection constitutes a waiver of his right to thereafter object on such ground to any final action of the Board. On or before the hearing date the Surveyor or any owner of lands named in the schedule of assessments may cause written evidence to be filed in support of or in rebuttal to any objection filed.

HAMILTON COUNTY DRAINAGE BOARD
One Hamilton County Square, Ste. 188
Noblesville, IN 46060

For a copy of the Surveyor's Report to the Drainage Board and a copy of the map, if applicable, please go to www.hamiltoncounty.in.gov/drainageboardnotices.

OFFICE OF
HAMILTON COUNTY DRAINAGE BOARD
 April 26, 2013

RETURNED

**Notice of Hearing to Establish Annual Assessments for the Periodic Maintenance of the
 Williams Creek Drainage Area, Elliott Creek #311Arm.**

Decoudreaux, Alecia A
 13072 Broad St
 Carmel, IN 46032

Under the Indiana Drainage Code, all land which drains directly, or indirectly, may be assessed for either maintenance cost or reconstruction cost within the drain. In making the calculation for each parcel, the Drainage Board must calculate the percentage of the cost attributable to each parcel of land benefitted. From time to time the assessments may be increased or changed. The chart below contains your proposed assessment and your percentage of the total annual maintenance contribution to the costs attributable to providing drainage to your land.

The Drainage Board has received a maintenance report and schedule of assessments which affects your land. You are hereby notified that the maintenance report of the County Surveyor and the schedule of assessments made by the Drainage Board have been filed and are available for public inspection in the office of the County Surveyor.

The Surveyor has estimated that the annual cost of periodically maintaining the entire drain is **\$58,067.82**. The schedule of assessments shows you are the owner of tracts within the drainage shed. The following is your pro rata share for each tract and the proposed annual assessment for those tracts: This assessment is not a charge for services associated with regulating the quality of storm water within your city or town.

Parcel: 17-09-28-00-02-012.000 Rate: Un-Regulated Subd				
Description	Acres Benefitted	Current Elliott Creek Assessment	Proposed Williams Creek Assessment	% of Total
S28 T18 R3 Village Of Westclay Lot 434	One Lot	\$15.00	\$35.00	0.06%
The period of collections will be until the balance in the Williams Creek Drainage Area fund reaches eight (8) times its annual assessment. When Elliott Creek is combined with Williams Creek, future assessments will be made to Williams Creek instead of Elliott Creek.				

A public hearing will be held by the Drainage Board in Commissioner's Court at **9:15 A.M. on May 28, 2013** on the Surveyor's maintenance report and the proposed schedule of assessments. The law requires that any objection must be written and filed not less than five (5) days before the above hearing on the ground that benefits assessed are excessive. Written evidence in support of objections may also be filed. The failure of any owner to file an objection constitutes a waiver of his right to thereafter object on such ground to any final action of the Board. On or before the hearing date the Surveyor or any owner of lands named in the schedule of assessments may cause written evidence to be filed in support of or in rebuttal to any objection filed.

HAMILTON COUNTY DRAINAGE BOARD
 One Hamilton County Square, Ste. 188
 Noblesville, IN 46060

For a copy of the Surveyor's Report to the Drainage Board and a copy of the map, if applicable, please go to www.hamiltoncounty.in.gov/drainageboardnotices.

RETURNED

OFFICE OF
HAMILTON COUNTY DRAINAGE BOARD
April 26, 2013

Notice of Hearing to Establish Annual Assessments for the Periodic Maintenance of the
Williams Creek Drainage Area, Elliott Creek #311Arm.

Cerio, Michael A & Rebecca L
12874 Horseferry Rd
Carmel, IN 46032

Under the Indiana Drainage Code, all land which drains directly, or indirectly, may be assessed for either maintenance cost or reconstruction cost within the drain. In making the calculation for each parcel, the Drainage Board must calculate the percentage of the cost attributable to each parcel of land benefitted. From time to time the assessments may be increased or changed. The chart below contains your proposed assessment and your percentage of the total annual maintenance contribution to the costs attributable to providing drainage to your land.

The Drainage Board has received a maintenance report and schedule of assessments which affects your land. You are hereby notified that the maintenance report of the County Surveyor and the schedule of assessments made by the Drainage Board have been filed and are available for public inspection in the office of the County Surveyor.

The Surveyor has estimated that the annual cost of periodically maintaining the entire drain is **\$58,067.82**. The schedule of assessments shows you are the owner of tracts within the drainage shed. The following is your pro rata share for each tract and the proposed annual assessment for those tracts: This assessment is not a charge for services associated with regulating the quality of storm water within your city or town.

Parcel: 17-09-28-00-32-015.000 Rate: Un-Regulated Subd

Description	Acres Benefitted	Current Elliott Creek Assessment	Proposed Williams Creek Assessment	% of Total
S28 T18 R3 Village Of Westclay AG01 Lot 424	One Lot	\$15.00	\$35.00	0.06%

The period of collections will be until the balance in the Williams Creek Drainage Area fund reaches eight (8) times its annual assessment. When Elliott Creek is combined with Williams Creek, future assessments will be made to Williams Creek instead of Elliott Creek.

A public hearing will be held by the Drainage Board in Commissioner's Court at **9:15 A.M. on May 28, 2013** on the Surveyor's maintenance report and the proposed schedule of assessments. The law requires that any objection must be written and filed not less than five (5) days before the above hearing on the ground that benefits assessed are excessive. Written evidence in support of objections may also be filed. The failure of any owner to file an objection constitutes a waiver of his right to thereafter object on such ground to any final action of the Board. On or before the hearing date the Surveyor or any owner of lands named in the schedule of assessments may cause written evidence to be filed in support of or in rebuttal to any objection filed.

HAMILTON COUNTY DRAINAGE BOARD
One Hamilton County Square, Ste. 188
Noblesville, IN 46060

For a copy of the Surveyor's Report to the Drainage Board and a copy of the map, if applicable, please go to www.hamiltoncounty.in.gov/drainageboardnotices.

OFFICE OF
HAMILTON COUNTY DRAINAGE BOARD
April 26, 2013

RETURNED

Notice of Hearing to Establish Annual Assessments for the Periodic Maintenance of the
Williams Creek Drainage Area, Elliott Creek #311Arm.

Kreutz, Margaret J & Thomas J Meeks Jt/Rs
2026 Stanhope St
Carmel, IN 46032

Under the Indiana Drainage Code, all land which drains directly, or indirectly, may be assessed for either maintenance cost or reconstruction cost within the drain. In making the calculation for each parcel, the Drainage Board must calculate the percentage of the cost attributable to each parcel of land benefitted. From time to time the assessments may be increased or changed. The chart below contains your proposed assessment and your percentage of the total annual maintenance contribution to the costs attributable to providing drainage to your land.

The Drainage Board has received a maintenance report and schedule of assessments which affects your land. You are hereby notified that the maintenance report of the County Surveyor and the schedule of assessments made by the Drainage Board have been filed and are available for public inspection in the office of the County Surveyor.

The Surveyor has estimated that the annual cost of periodically maintaining the entire drain is **\$58,067.82**. The schedule of assessments shows you are the owner of tracts within the drainage shed. The following is your pro rata share for each tract and the proposed annual assessment for those tracts: This assessment is not a charge for services associated with regulating the quality of storm water within your city or town.

Parcel: 17-09-28-00-20-010.000 Rate: Un-Regulated Subd				
Description	Acres Benefitted	Current Elliott Creek Assessment	Proposed Williams Creek Assessment	% of Total
S28 T18 R3 Village Of Westclay Lot 643	One Lot	\$15.00	\$35.00	0.06%
The period of collections will be until the balance in the Williams Creek Drainage Area fund reaches eight (8) times its annual assessment. When Elliott Creek is combined with Williams Creek, future assessments will be made to Williams Creek instead of Elliott Creek.				

A public hearing will be held by the Drainage Board in Commissioner's Court at **9:15 A.M. on May 28, 2013** on the Surveyor's maintenance report and the proposed schedule of assessments. The law requires that any objection must be written and filed not less than five (5) days before the above hearing on the ground that benefits assessed are excessive. Written evidence in support of objections may also be filed. The failure of any owner to file an objection constitutes a waiver of his right to thereafter object on such ground to any final action of the Board. On or before the hearing date the Surveyor or any owner of lands named in the schedule of assessments may cause written evidence to be filed in support of or in rebuttal to any objection filed.

HAMILTON COUNTY DRAINAGE BOARD
One Hamilton County Square, Ste. 188
Noblesville, IN 46060

For a copy of the Surveyor's Report to the Drainage Board and a copy of the map, if applicable, please go to www.hamiltoncounty.in.gov/drainageboardnotices.

RETURNED

OFFICE OF
HAMILTON COUNTY DRAINAGE BOARD
April 26, 2013

Notice of Hearing to Establish Annual Assessments for the Periodic Maintenance of the
Williams Creek Drainage Area, Elliott Creek #311Arm.

Gaines, Brian
12938 University Crescent Unit 2A
Carmel, IN 46032

Under the Indiana Drainage Code, all land which drains directly, or indirectly, may be assessed for either maintenance cost or reconstruction cost within the drain. In making the calculation for each parcel, the Drainage Board must calculate the percentage of the cost attributable to each parcel of land benefitted. From time to time the assessments may be increased or changed. The chart below contains your proposed assessment and your percentage of the total annual maintenance contribution to the costs attributable to providing drainage to your land.

The Drainage Board has received a maintenance report and schedule of assessments which affects your land. You are hereby notified that the maintenance report of the County Surveyor and the schedule of assessments made by the Drainage Board have been filed and are available for public inspection in the office of the County Surveyor.

The Surveyor has estimated that the annual cost of periodically maintaining the entire drain is **\$58,067.82**. The schedule of assessments shows you are the owner of tracts within the drainage shed. The following is your pro rata share for each tract and the proposed annual assessment for those tracts: This assessment is not a charge for services associated with regulating the quality of storm water within your city or town.

Parcel: 17-09-28-00-47-023.000 Rate: Un-Regulated Subd				
Description	Acres Benefitted	Current Elliott Creek Assessment	Proposed Williams Creek Assessment	% of Total
S28 T18 R3 Wentworth At Westclay Condo Bldg 3 Unit 2A	One Lot	\$15.00	\$35.00	0.06%
The period of collections will be until the balance in the Williams Creek Drainage Area fund reaches eight (8) times its annual assessment. When Elliott Creek is combined with Williams Creek, future assessments will be made to Williams Creek instead of Elliott Creek.				

A public hearing will be held by the Drainage Board in Commissioner's Court at **9:15 A.M. on May 28, 2013** on the Surveyor's maintenance report and the proposed schedule of assessments. The law requires that any objection must be written and filed not less than five (5) days before the above hearing on the ground that benefits assessed are excessive. Written evidence in support of objections may also be filed. The failure of any owner to file an objection constitutes a waiver of his right to thereafter object on such ground to any final action of the Board. On or before the hearing date the Surveyor or any owner of lands named in the schedule of assessments may cause written evidence to be filed in support of or in rebuttal to any objection filed.

HAMILTON COUNTY DRAINAGE BOARD
One Hamilton County Square, Ste. 188
Noblesville, IN 46060

For a copy of the Surveyor's Report to the Drainage Board and a copy of the map, if applicable, please go to www.hamiltoncounty.in.gov/drainageboardnotices.

RETURNED

OFFICE OF
HAMILTON COUNTY DRAINAGE BOARD
April 26, 2013

Notice of Hearing to Establish Annual Assessments for the Periodic Maintenance of the
Williams Creek Drainage Area, Elliott Creek #311Arm.

Brown, Elizabeth J
12938 University Crescent Unit 2B
Carmel, IN 46032

Under the Indiana Drainage Code, all land which drains directly, or indirectly, may be assessed for either maintenance cost or reconstruction cost within the drain. In making the calculation for each parcel, the Drainage Board must calculate the percentage of the cost attributable to each parcel of land benefitted. From time to time the assessments may be increased or changed. The chart below contains your proposed assessment and your percentage of the total annual maintenance contribution to the costs attributable to providing drainage to your land.

The Drainage Board has received a maintenance report and schedule of assessments which affects your land. You are hereby notified that the maintenance report of the County Surveyor and the schedule of assessments made by the Drainage Board have been filed and are available for public inspection in the office of the County Surveyor.

The Surveyor has estimated that the annual cost of periodically maintaining the entire drain is **\$58,067.82**. The schedule of assessments shows you are the owner of tracts within the drainage shed. The following is your pro rata share for each tract and the proposed annual assessment for those tracts: This assessment is not a charge for services associated with regulating the quality of storm water within your city or town.

Parcel: 17-09-28-00-47-024.000 Rate: Un-Regulated Subd

Description	Acres Benefitted	Current Elliott Creek Assessment	Proposed Williams Creek Assessment	% of Total
S28 T18 R3 Wentworth At Westclay Condo Bldg 3 Unit 2B	One Lot	\$15.00	\$35.00	0.06%

The period of collections will be until the balance in the Williams Creek Drainage Area fund reaches eight (8) times its annual assessment. When Elliott Creek is combined with Williams Creek, future assessments will be made to Williams Creek instead of Elliott Creek.

A public hearing will be held by the Drainage Board in Commissioner's Court at **9:15 A.M. on May 28, 2013** on the Surveyor's maintenance report and the proposed schedule of assessments. The law requires that any objection must be written and filed not less than five (5) days before the above hearing on the ground that benefits assessed are excessive. Written evidence in support of objections may also be filed. The failure of any owner to file an objection constitutes a waiver of his right to thereafter object on such ground to any final action of the Board. On or before the hearing date the Surveyor or any owner of lands named in the schedule of assessments may cause written evidence to be filed in support of or in rebuttal to any objection filed.

HAMILTON COUNTY DRAINAGE BOARD
One Hamilton County Square, Ste. 188
Noblesville, IN 46060

For a copy of the Surveyor's Report to the Drainage Board and a copy of the map, if applicable, please go to www.hamiltoncounty.in.gov/drainageboardnotices.

OFFICE OF
HAMILTON COUNTY DRAINAGE BOARD
April 26, 2013

RETURNED

Notice of Hearing to Establish Annual Assessments for the Periodic Maintenance of the
Williams Creek Drainage Area, Elliott Creek #311Arm.

Smith, Carolyn M
12880 University Crescent Unit 2A
Carmel, IN 46032

Under the Indiana Drainage Code, all land which drains directly, or indirectly, may be assessed for either maintenance cost or reconstruction cost within the drain. In making the calculation for each parcel, the Drainage Board must calculate the percentage of the cost attributable to each parcel of land benefitted. From time to time the assessments may be increased or changed. The chart below contains your proposed assessment and your percentage of the total annual maintenance contribution to the costs attributable to providing drainage to your land.

The Drainage Board has received a maintenance report and schedule of assessments which affects your land. You are hereby notified that the maintenance report of the County Surveyor and the schedule of assessments made by the Drainage Board have been filed and are available for public inspection in the office of the County Surveyor.

The Surveyor has estimated that the annual cost of periodically maintaining the entire drain is **\$58,067.82**. The schedule of assessments shows you are the owner of tracts within the drainage shed. The following is your pro rata share for each tract and the proposed annual assessment for those tracts: This assessment is not a charge for services associated with regulating the quality of storm water within your city or town.

Parcel: 17-09-28-00-47-096.000 Rate: Un-Regulated Subd				
Description	Acres Benefitted	Current Elliott Creek Assessment	Proposed Williams Creek Assessment	% of Total
S28 T18 R3 Wentworth At Westclay Condo Bldg 11 Unit 2A	One Lot	\$15.00	\$35.00	0.06%
The period of collections will be until the balance in the Williams Creek Drainage Area fund reaches eight (8) times its annual assessment. When Elliott Creek is combined with Williams Creek, future assessments will be made to Williams Creek instead of Elliott Creek.				

A public hearing will be held by the Drainage Board in Commissioner's Court at **9:15 A.M. on May 28, 2013** on the Surveyor's maintenance report and the proposed schedule of assessments. The law requires that any objection must be written and filed not less than five (5) days before the above hearing on the ground that benefits assessed are excessive. Written evidence in support of objections may also be filed. The failure of any owner to file an objection constitutes a waiver of his right to thereafter object on such ground to any final action of the Board. On or before the hearing date the Surveyor or any owner of lands named in the schedule of assessments may cause written evidence to be filed in support of or in rebuttal to any objection filed.

HAMILTON COUNTY DRAINAGE BOARD
One Hamilton County Square, Ste. 188
Noblesville, IN 46060

For a copy of the Surveyor's Report to the Drainage Board and a copy of the map, if applicable, please go to www.hamiltoncounty.in.gov/drainageboardnotices.

RETURNED

OFFICE OF
HAMILTON COUNTY DRAINAGE BOARD
April 26, 2013

Notice of Hearing to Establish Annual Assessments for the Periodic Maintenance of the
Williams Creek Drainage Area, Elliott Creek #311Arm.

Jaradat, Hassan
12860 University Cres Unit 3D
Carmel, IN 46032

Under the Indiana Drainage Code, all land which drains directly, or indirectly, may be assessed for either maintenance cost or reconstruction cost within the drain. In making the calculation for each parcel, the Drainage Board must calculate the percentage of the cost attributable to each parcel of land benefitted. From time to time the assessments may be increased or changed. The chart below contains your proposed assessment and your percentage of the total annual maintenance contribution to the costs attributable to providing drainage to your land.

The Drainage Board has received a maintenance report and schedule of assessments which affects your land. You are hereby notified that the maintenance report of the County Surveyor and the schedule of assessments made by the Drainage Board have been filed and are available for public inspection in the office of the County Surveyor.

The Surveyor has estimated that the annual cost of periodically maintaining the entire drain is **\$58,067.82**. The schedule of assessments shows you are the owner of tracts within the drainage shed. The following is your pro rata share for each tract and the proposed annual assessment for those tracts: This assessment is not a charge for services associated with regulating the quality of storm water within your city or town.

Parcel: 17-09-28-00-47-113.000 Rate: Un-Regulated Subd				
Description	Acres Benefitted	Current Elliott Creek Assessment	Proposed Williams Creek Assessment	% of Total
S28 T18 R3 Wentworth At Westclay Condo Bldg 12 Unit 3D	One Lot	\$15.00	\$35.00	0.06%
The period of collections will be until the balance in the Williams Creek Drainage Area fund reaches eight (8) times its annual assessment. When Elliott Creek is combined with Williams Creek, future assessments will be made to Williams Creek instead of Elliott Creek.				

A public hearing will be held by the Drainage Board in Commissioner's Court at **9:15 A.M. on May 28, 2013** on the Surveyor's maintenance report and the proposed schedule of assessments. The law requires that any objection must be written and filed not less than five (5) days before the above hearing on the ground that benefits assessed are excessive. Written evidence in support of objections may also be filed. The failure of any owner to file an objection constitutes a waiver of his right to thereafter object on such ground to any final action of the Board. On or before the hearing date the Surveyor or any owner of lands named in the schedule of assessments may cause written evidence to be filed in support of or in rebuttal to any objection filed.

HAMILTON COUNTY DRAINAGE BOARD
One Hamilton County Square, Ste. 188
Noblesville, IN 46060

For a copy of the Surveyor's Report to the Drainage Board and a copy of the map, if applicable, please go to www.hamiltoncounty.in.gov/drainageboardnotices.

OFFICE OF
HAMILTON COUNTY DRAINAGE BOARD
April 26, 2013

RETURNED

Notice of Hearing to Establish Annual Assessments for the Periodic Maintenance of the
Williams Creek Drainage Area, Elliott Creek #311Arm.

Arthur, Craig James
12860 University Crescent Unit 3A
Carmel, IN 46032

Under the Indiana Drainage Code, all land which drains directly, or indirectly, may be assessed for either maintenance cost or reconstruction cost within the drain. In making the calculation for each parcel, the Drainage Board must calculate the percentage of the cost attributable to each parcel of land benefitted. From time to time the assessments may be increased or changed. The chart below contains your proposed assessment and your percentage of the total annual maintenance contribution to the costs attributable to providing drainage to your land.

The Drainage Board has received a maintenance report and schedule of assessments which affects your land. You are hereby notified that the maintenance report of the County Surveyor and the schedule of assessments made by the Drainage Board have been filed and are available for public inspection in the office of the County Surveyor.

The Surveyor has estimated that the annual cost of periodically maintaining the entire drain is **\$58,067.82**. The schedule of assessments shows you are the owner of tracts within the drainage shed. The following is your pro rata share for each tract and the proposed annual assessment for those tracts: This assessment is not a charge for services associated with regulating the quality of storm water within your city or town.

Parcel: 17-09-28-00-47-222.000 Rate: Un-Regulated Subd				
Description	Acres Benefited	Current Elliott Creek Assessment	Proposed Williams Creek Assessment	% of Total
S28 T18 R3 Wentworth At Westclay Condo Bldg 12	One Lot	\$15.00	\$35.00	0.06%
The period of collections will be until the balance in the Williams Creek Drainage Area fund reaches eight (8) times its annual assessment. When Elliott Creek is combined with Williams Creek, future assessments will be made to Williams Creek instead of Elliott Creek.				

A public hearing will be held by the Drainage Board in Commissioner's Court at **9:15 A.M. on May 28, 2013** on the Surveyor's maintenance report and the proposed schedule of assessments. The law requires that any objection must be written and filed not less than five (5) days before the above hearing on the ground that benefits assessed are excessive. Written evidence in support of objections may also be filed. The failure of any owner to file an objection constitutes a waiver of his right to thereafter object on such ground to any final action of the Board. On or before the hearing date the Surveyor or any owner of lands named in the schedule of assessments may cause written evidence to be filed in support of or in rebuttal to any objection filed.

HAMILTON COUNTY DRAINAGE BOARD
One Hamilton County Square, Ste. 188
Noblesville, IN 46060

For a copy of the Surveyor's Report to the Drainage Board and a copy of the map, if applicable, please go to www.hamiltoncounty.in.gov/drainageboardnotices.

RETURNED

OFFICE OF
HAMILTON COUNTY DRAINAGE BOARD

April 26, 2013

Notice of Hearing to Establish Annual Assessments for the Periodic Maintenance of the
Williams Creek Drainage Area, Elliott Creek #311Arm.

Arthur, Craig J
12860 University Crescent Unit 3A
Carmel, IN 46032

Under the Indiana Drainage Code, all land which drains directly, or indirectly, may be assessed for either maintenance cost or reconstruction cost within the drain. In making the calculation for each parcel, the Drainage Board must calculate the percentage of the cost attributable to each parcel of land benefited. From time to time the assessments may be increased or changed. The chart below contains your proposed assessment and your percentage of the total annual maintenance contribution to the costs attributable to providing drainage to your land.

The Drainage Board has received a maintenance report and schedule of assessments which affects your land. You are hereby notified that the maintenance report of the County Surveyor and the schedule of assessments made by the Drainage Board have been filed and are available for public inspection in the office of the County Surveyor.

The Surveyor has estimated that the annual cost of periodically maintaining the entire drain is **\$58,067.82**. The schedule of assessments shows you are the owner of tracts within the drainage shed. The following is your pro rata share for each tract and the proposed annual assessment for those tracts: This assessment is not a charge for services associated with regulating the quality of storm water within your city or town.

Parcel: 17-09-28-00-47-110.000 Rate: Un-Regulated Subd				
Description	Acres Benefited	Current Elliott Creek Assessment	Proposed Williams Creek Assessment	% of Total
S28 T18 R3 Wentworth At Westclay Condo Bldg 12 Unit 3A	One Lot	\$15.00	\$35.00	0.06%
The period of collections will be until the balance in the Williams Creek Drainage Area fund reaches eight (8) times its annual assessment. When Elliott Creek is combined with Williams Creek, future assessments will be made to Williams Creek instead of Elliott Creek.				

A public hearing will be held by the Drainage Board in Commissioner's Court at **9:15 A.M. on May 28, 2013** on the Surveyor's maintenance report and the proposed schedule of assessments. The law requires that any objection must be written and filed not less than five (5) days before the above hearing on the ground that benefits assessed are excessive. Written evidence in support of objections may also be filed. The failure of any owner to file an objection constitutes a waiver of his right to thereafter object on such ground to any final action of the Board. On or before the hearing date the Surveyor or any owner of lands named in the schedule of assessments may cause written evidence to be filed in support of or in rebuttal to any objection filed.

HAMILTON COUNTY DRAINAGE BOARD
One Hamilton County Square, Ste. 188
Noblesville, IN 46060

For a copy of the Surveyor's Report to the Drainage Board and a copy of the map, if applicable, please go to www.hamiltoncounty.in.gov/drainageboardnotices.

OFFICE OF
HAMILTON COUNTY DRAINAGE BOARD
April 26, 2013

RETURNED

Notice of Hearing to Establish Annual Assessments for the Periodic Maintenance of the
Williams Creek Drainage Area, Elliott Creek #311Arm.

Karup, Aravindaksha & Omana A
13170 Gatman Ct
Carmel, IN 46032

Under the Indiana Drainage Code, all land which drains directly, or indirectly, may be assessed for either maintenance cost or reconstruction cost within the drain. In making the calculation for each parcel, the Drainage Board must calculate the percentage of the cost attributable to each parcel of land benefitted. From time to time the assessments may be increased or changed. The chart below contains your proposed assessment and your percentage of the total annual maintenance contribution to the costs attributable to providing drainage to your land.

The Drainage Board has received a maintenance report and schedule of assessments which affects your land. You are hereby notified that the maintenance report of the County Surveyor and the schedule of assessments made by the Drainage Board have been filed and are available for public inspection in the office of the County Surveyor.

The Surveyor has estimated that the annual cost of periodically maintaining the entire drain is **\$58,067.82**. The schedule of assessments shows you are the owner of tracts within the drainage shed. The following is your pro rata share for each tract and the proposed annual assessment for those tracts: This assessment is not a charge for services associated with regulating the quality of storm water within your city or town.

Parcel: 17-09-28-00-36-021.000 Rate: Regulated Subd				
Description	Acres Benefitted	Current Elliott Creek Assessment	Proposed Williams Creek Assessment	% of Total
S28 T18 R3 Village Of Towne Pointe Lot 21	One Lot	\$65.00	\$65.00	0.11%

The period of collections will be until the balance in the Williams Creek Drainage Area fund reaches eight (8) times its annual assessment. When Elliott Creek is combined with Williams Creek, future assessments will be made to Williams Creek instead of Elliott Creek.

A public hearing will be held by the Drainage Board in Commissioner's Court at **9:15 A.M. on May 28, 2013** on the Surveyor's maintenance report and the proposed schedule of assessments. The law requires that any objection must be written and filed not less than five (5) days before the above hearing on the ground that benefits assessed are excessive. Written evidence in support of objections may also be filed. The failure of any owner to file an objection constitutes a waiver of his right to thereafter object on such ground to any final action of the Board. On or before the hearing date the Surveyor or any owner of lands named in the schedule of assessments may cause written evidence to be filed in support of or in rebuttal to any objection filed.

HAMILTON COUNTY DRAINAGE BOARD
One Hamilton County Square, Ste. 188
Noblesville, IN 46060

For a copy of the Surveyor's Report to the Drainage Board and a copy of the map, if applicable, please go to www.hamiltoncounty.in.gov/drainageboardnotices.

RETURNED

OFFICE OF
HAMILTON COUNTY DRAINAGE BOARD
April 26, 2013

Notice of Hearing to Establish Annual Assessments for the Periodic Maintenance of the
Williams Creek Drainage Area, Elliott Creek #311Arm.

Satele, Lenora Trista
13377 Mercer St
Carmel, IN 46032

Under the Indiana Drainage Code, all land which drains directly, or indirectly, may be assessed for either maintenance cost or reconstruction cost within the drain. In making the calculation for each parcel, the Drainage Board must calculate the percentage of the cost attributable to each parcel of land benefitted. From time to time the assessments may be increased or changed. The chart below contains your proposed assessment and your percentage of the total annual maintenance contribution to the costs attributable to providing drainage to your land.

The Drainage Board has received a maintenance report and schedule of assessments which affects your land. You are hereby notified that the maintenance report of the County Surveyor and the schedule of assessments made by the Drainage Board have been filed and are available for public inspection in the office of the County Surveyor.

The Surveyor has estimated that the annual cost of periodically maintaining the entire drain is **\$58,067.82**. The schedule of assessments shows you are the owner of tracts within the drainage shed. The following is your pro rata share for each tract and the proposed annual assessment for those tracts: This assessment is not a charge for services associated with regulating the quality of storm water within your city or town.

Parcel: 17-09-28-00-53-022.000 Rate: Un-Regulated Subd				
Description	Acres Benefited	Current Elliott Creek Assessment	Proposed Williams Creek Assessment	% of Total
S28 T18 R3 Village Of Westclay 9003rd Lot 32	One Lot	\$15.00	\$35.00	0.06%
The period of collections will be until the balance in the Williams Creek Drainage Area fund reaches eight (8) times its annual assessment. When Elliott Creek is combined with Williams Creek, future assessments will be made to Williams Creek instead of Elliott Creek.				

A public hearing will be held by the Drainage Board in Commissioner's Court at **9:15 A.M. on May 28, 2013** on the Surveyor's maintenance report and the proposed schedule of assessments. The law requires that any objection must be written and filed not less than five (5) days before the above hearing on the ground that benefits assessed are excessive. Written evidence in support of objections may also be filed. The failure of any owner to file an objection constitutes a waiver of his right to thereafter object on such ground to any final action of the Board. On or before the hearing date the Surveyor or any owner of lands named in the schedule of assessments may cause written evidence to be filed in support of or in rebuttal to any objection filed.

HAMILTON COUNTY DRAINAGE BOARD
One Hamilton County Square, Ste. 188
Noblesville, IN 46060

For a copy of the Surveyor's Report to the Drainage Board and a copy of the map, if applicable, please go to www.hamiltoncounty.in.gov/drainageboardnotices.

OFFICE OF
HAMILTON COUNTY DRAINAGE BOARD

April 26, 2013

RETURNED

MAY 23 2013

Notice of Hearing to Establish Annual Assessments for the Periodic Maintenance of the
Williams Creek Drainage Area, Elliott Creek #311Arm.

12850 Horseferry Revocable Trust
12850 Horseferry Rd
Carmel, IN 46032

Under the Indiana Drainage Code, all land which drains directly, or indirectly, may be assessed for either maintenance cost or reconstruction cost within the drain. In making the calculation for each parcel, the Drainage Board must calculate the percentage of the cost attributable to each parcel of land benefitted. From time to time the assessments may be increased or changed. The chart below contains your proposed assessment and your percentage of the total annual maintenance contribution to the costs attributable to providing drainage to your land.

The Drainage Board has received a maintenance report and schedule of assessments which affects your land. You are hereby notified that the maintenance report of the County Surveyor and the schedule of assessments made by the Drainage Board have been filed and are available for public inspection in the office of the County Surveyor.

The Surveyor has estimated that the annual cost of periodically maintaining the entire drain is **\$58,067.82**. The schedule of assessments shows you are the owner of tracts within the drainage shed. The following is your pro rata share for each tract and the proposed annual assessment for those tracts: This assessment is not a charge for services associated with regulating the quality of storm water within your city or town.

Parcel: 17-09-28-00-32-013.000 Rate: Un-Regulated Subd				
Description	Acres Benefited	Current Elliott Creek Assessment	Proposed Williams Creek Assessment	% of Total
S28 T18 R3 Village Of Westclay AG01 Lot 422	One Lot	\$15.00	\$35.00	0.06%
The period of collections will be until the balance in the Williams Creek Drainage Area fund reaches eight (8) times its annual assessment. When Elliott Creek is combined with Williams Creek, future assessments will be made to Williams Creek instead of Elliott Creek.				

A public hearing will be held by the Drainage Board in Commissioner's Court at **9:15 A.M. on May 28, 2013** on the Surveyor's maintenance report and the proposed schedule of assessments. The law requires that any objection must be written and filed not less than five (5) days before the above hearing on the ground that benefits assessed are excessive. Written evidence in support of objections may also be filed. The failure of any owner to file an objection constitutes a waiver of his right to thereafter object on such ground to any final action of the Board. On or before the hearing date the Surveyor or any owner of lands named in the schedule of assessments may cause written evidence to be filed in support of or in rebuttal to any objection filed.

HAMILTON COUNTY DRAINAGE BOARD
One Hamilton County Square, Ste. 188
Noblesville, IN 46060

For a copy of the Surveyor's Report to the Drainage Board and a copy of the map, if applicable, please go to www.hamiltoncounty.in.gov/drainageboardnotices.

RETURNED

OFFICE OF
HAMILTON COUNTY DRAINAGE BOARD

April 26, 2013

MAY 28 2013

Notice of Hearing to Establish Annual Assessments for the Periodic Maintenance of the
Williams Creek Drainage Area, Elliott Creek #311Arm.

Wohlfeld, Bruce & Susan S
116 Haverhill Dr
Ponte Vedra Beach, FL 32082

Under the Indiana Drainage Code, all land which drains directly, or indirectly, may be assessed for either maintenance cost or reconstruction cost within the drain. In making the calculation for each parcel, the Drainage Board must calculate the percentage of the cost attributable to each parcel of land benefitted. From time to time the assessments may be increased or changed. The chart below contains your proposed assessment and your percentage of the total annual maintenance contribution to the costs attributable to providing drainage to your land.

The Drainage Board has received a maintenance report and schedule of assessments which affects your land. You are hereby notified that the maintenance report of the County Surveyor and the schedule of assessments made by the Drainage Board have been filed and are available for public inspection in the office of the County Surveyor.

The Surveyor has estimated that the annual cost of periodically maintaining the entire drain is **\$58,067.82**. The schedule of assessments shows you are the owner of tracts within the drainage shed. The following is your pro rata share for each tract and the proposed annual assessment for those tracts: This assessment is not a charge for services associated with regulating the quality of storm water within your city or town.

Parcel: 17-09-28-00-47-193.000 Rate: Un-Regulated Subd

Description	Acres Benefitted	Current Elliott Creek Assessment	Proposed Williams Creek Assessment	% of Total
S28 T18 R3 Wentworth At Westclay Condo Bldg 3	One Lot	\$15.00	\$35.00	0.06%

The period of collections will be until the balance in the Williams Creek Drainage Area fund reaches eight (8) times its annual assessment. When Elliott Creek is combined with Williams Creek, future assessments will be made to Williams Creek instead of Elliott Creek.

A public hearing will be held by the Drainage Board in Commissioner's Court at **9:15 A.M. on May 28, 2013** on the Surveyor's maintenance report and the proposed schedule of assessments. The law requires that any objection must be written and filed not less than five (5) days before the above hearing on the ground that benefits assessed are excessive. Written evidence in support of objections may also be filed. The failure of any owner to file an objection constitutes a waiver of his right to thereafter object on such ground to any final action of the Board. On or before the hearing date the Surveyor or any owner of lands named in the schedule of assessments may cause written evidence to be filed in support of or in rebuttal to any objection filed.

HAMILTON COUNTY DRAINAGE BOARD
One Hamilton County Square, Ste. 188
Noblesville, IN 46060

For a copy of the Surveyor's Report to the Drainage Board and a copy of the map, if applicable, please go to www.hamiltoncounty.in.gov/drainageboardnotices.

RETURNED

OFFICE OF
HAMILTON COUNTY DRAINAGE BOARD

April 26, 2013

MAY 28 2013

Notice of Hearing to Establish Annual Assessments for the Periodic Maintenance of the
Williams Creek Drainage Area, Elliott Creek #311Arm.

Wohlfeld, Bruce & Susan S
116 Haverhill Dr
Ponte Vedra Beach, FL 32082

Under the Indiana Drainage Code, all land which drains directly, or indirectly, may be assessed for either maintenance cost or reconstruction cost within the drain. In making the calculation for each parcel, the Drainage Board must calculate the percentage of the cost attributable to each parcel of land benefitted. From time to time the assessments may be increased or changed. The chart below contains your proposed assessment and your percentage of the total annual maintenance contribution to the costs attributable to providing drainage to your land.

The Drainage Board has received a maintenance report and schedule of assessments which affects your land. You are hereby notified that the maintenance report of the County Surveyor and the schedule of assessments made by the Drainage Board have been filed and are available for public inspection in the office of the County Surveyor.

The Surveyor has estimated that the annual cost of periodically maintaining the entire drain is **\$58,067.82**. The schedule of assessments shows you are the owner of tracts within the drainage shed. The following is your pro rata share for each tract and the proposed annual assessment for those tracts: This assessment is not a charge for services associated with regulating the quality of storm water within your city or town.

Parcel: 17-09-28-00-47-021.000 Rate: Un-Regulated Subd				
Description	Acres Benefited	Current Elliott Creek Assessment	Proposed Williams Creek Assessment	% of Total
S28 T18 R3 Wentworth At Westclay Condo Bldg 3 Unit 1A	One Lot	\$15.00	\$35.00	0.06%
The period of collections will be until the balance in the Williams Creek Drainage Area fund reaches eight (8) times its annual assessment. When Elliott Creek is combined with Williams Creek, future assessments will be made to Williams Creek instead of Elliott Creek.				

A public hearing will be held by the Drainage Board in Commissioner's Court at **9:15 A.M. on May 28, 2013** on the Surveyor's maintenance report and the proposed schedule of assessments. The law requires that any objection must be written and filed not less than five (5) days before the above hearing on the ground that benefits assessed are excessive. Written evidence in support of objections may also be filed. The failure of any owner to file an objection constitutes a waiver of his right to thereafter object on such ground to any final action of the Board. On or before the hearing date the Surveyor or any owner of lands named in the schedule of assessments may cause written evidence to be filed in support of or in rebuttal to any objection filed.

HAMILTON COUNTY DRAINAGE BOARD
One Hamilton County Square, Ste. 188
Noblesville, IN 46060

For a copy of the Surveyor's Report to the Drainage Board and a copy of the map, if applicable, please go to www.hamiltoncounty.in.gov/drainageboardnotices.

RETURNED

OFFICE OF
HAMILTON COUNTY DRAINAGE BOARD

April 26, 2013

MAY 28 2013

Notice of Hearing to Establish Annual Assessments for the Periodic Maintenance of the
Williams Creek Drainage Area, Elliott Creek #311Arm.

Cason, Kenneth G II & Brenda F
1787 Halifax St
Carmel, IN 46032

Under the Indiana Drainage Code, all land which drains directly, or indirectly, may be assessed for either maintenance cost or reconstruction cost within the drain. In making the calculation for each parcel, the Drainage Board must calculate the percentage of the cost attributable to each parcel of land benefitted. From time to time the assessments may be increased or changed. The chart below contains your proposed assessment and your percentage of the total annual maintenance contribution to the costs attributable to providing drainage to your land.

The Drainage Board has received a maintenance report and schedule of assessments which affects your land. You are hereby notified that the maintenance report of the County Surveyor and the schedule of assessments made by the Drainage Board have been filed and are available for public inspection in the office of the County Surveyor.

The Surveyor has estimated that the annual cost of periodically maintaining the entire drain is **\$58,067.82**. The schedule of assessments shows you are the owner of tracts within the drainage shed. The following is your pro rata share for each tract and the proposed annual assessment for those tracts: This assessment is not a charge for services associated with regulating the quality of storm water within your city or town.

Parcel: 17-09-28-00-42-007.000 Rate: Un-Regulated Subd				
Description	Acres Benefited	Current Elliott Creek Assessment	Proposed Williams Creek Assessment	% of Total
S28 T18 R3 Village Of Westclay 9005th Lot 65	One Lot	\$15.00	\$35.00	0.06%
The period of collections will be until the balance in the Williams Creek Drainage Area fund reaches eight (8) times its annual assessment. When Elliott Creek is combined with Williams Creek, future assessments will be made to Williams Creek instead of Elliott Creek.				

A public hearing will be held by the Drainage Board in Commissioner's Court at **9:15 A.M. on May 28, 2013** on the Surveyor's maintenance report and the proposed schedule of assessments. The law requires that any objection must be written and filed not less than five (5) days before the above hearing on the ground that benefits assessed are excessive. Written evidence in support of objections may also be filed. The failure of any owner to file an objection constitutes a waiver of his right to thereafter object on such ground to any final action of the Board. On or before the hearing date the Surveyor or any owner of lands named in the schedule of assessments may cause written evidence to be filed in support of or in rebuttal to any objection filed.

HAMILTON COUNTY DRAINAGE BOARD
One Hamilton County Square, Ste. 188
Noblesville, IN 46060

For a copy of the Surveyor's Report to the Drainage Board and a copy of the map, if applicable, please go to www.hamiltoncounty.in.gov/drainageboardnotices.

BEFORE THE HAMILTON COUNTY DRAINAGE BOARD
IN THE MATTER OF

Williams Creek Drainage Area, Elliott Creek Arm

NOTICE

To Whom It May Concern and: Chapman, Nairi K.
Decoudreaux, Alecia A.
Cerio Michael A. & Rebecca L.
Kreutz, Margaret J. & Thomas J. Meeks
Gaines, Brian
Brown, Elizabeth J.
Smith, Carolyn M.
Jaradt, Hassan
Arthur, Craig James
Karup, Aravindaksha & Omana A.
Satele, Lenora Trista

Notice is hereby given of the hearing of the Hamilton County Drainage Board on the **Williams Creek Drainage Area, Elliott Creek Arm** on **May 28, 2013** at **9:15 A.M.** in Commissioners Court, Hamilton County Judicial Center, One Hamilton County Square, Noblesville, Indiana, and which construction and maintenance reports of the Surveyor and the Schedule of Assessments made by the Drainage Board have been filed and are available for public inspection in the office of the Hamilton County Surveyor.

Hamilton County Drainage Board

Attest: Lynette Mosbaugh

ONE TIME ONLY

BEFORE THE HAMILTON COUNTY DRAINAGE BOARD
IN THE MATTER OF THE

Williams Creek Drainage Area, Elliott Creek Arm

NOTICE

Notice is hereby given pursuant to Section 405 of the 1965 Indiana Drainage Code that this Board, prior to final adjournment on **May 28, 2013** has issued an order adopting the Schedule of Assessments, filed the same and made public announcement thereof at the hearing and ordered publication. If judicial review of the findings and order of the Board is not requested pursuant to Article Eight of this code within twenty (20) days from the date of this publication, the order shall be conclusive.

Hamilton County Drainage Board

Attest: Lynette Mosbaugh

ONE TIME ONLY